

Protech Traffic Control
 41425 South Sumas Road
 Chilliwack, BC
 V2R 4K5

We Keep You Safe !!
 604-317-8324

Date: 07/12/2016 **Author:** LG Project: Triahn Enterprises
Edward St @ Burnard Ave : TMP A

Comments:
 MOT Figure 3.3.1 Work on Low Volume Roadway- No Centre line.
 Road Closure with Local Traffic only signage posted.
 TCPs will allow access to residences,
 and will escort pedestrians safety around the work zone.



Date: 07/12/2016 Author: LG Project: Triahn Enterprises
Edward St @ Burnard Ave : TMP C

Comments:

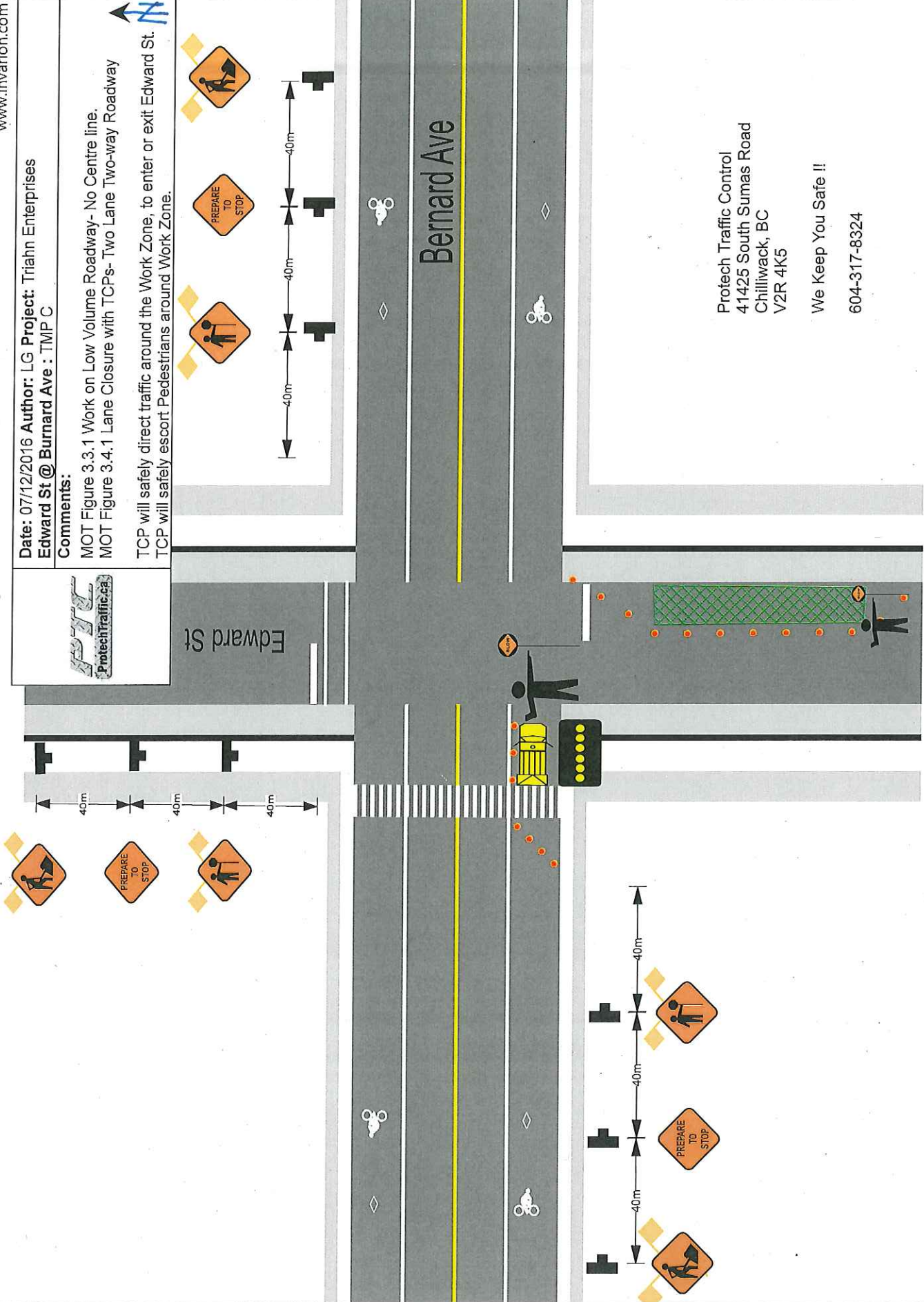
MOT Figure 3.3.1 Work on Low Volume Roadway- No Centre line.
MOT Figure 3.4.1 Lane Closure with TCPs- Two Lane Two-way Roadway

TCP will safely direct traffic around the Work Zone, to enter or exit Edward St.
TCP will safely escort Pedestrians around Work Zone.



Edward St

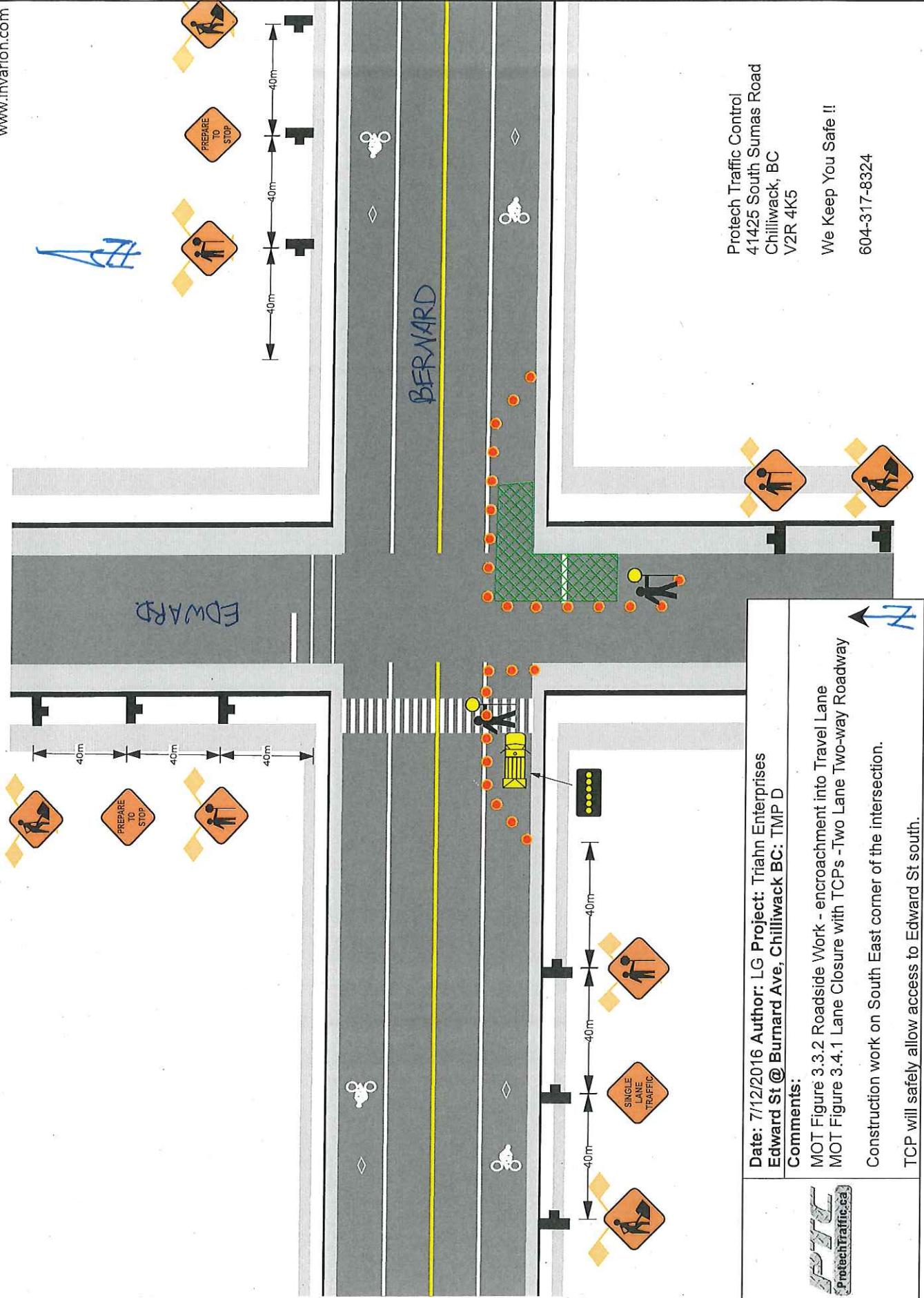
Bernard Ave



Protech Traffic Control
41425 South Sumas Road
Chilliwack, BC
V2R 4K5

We Keep You Safe !!

604-317-8324



Protech Traffic Control
 41425 South Sumas Road
 Chilliwack, BC
 V2R 4K5
 We Keep You Safe !!
 604-317-8324

	<p>Date: 7/12/2016 Author: LG Project: Triahn Enterprises Edward St @ Burnard Ave, Chilliwack BC: TMP D</p> <p>Comments: MOT Figure 3.3.2 Roadside Work - encroachment into Travel Lane MOT Figure 3.4.1 Lane Closure with TCPs - Two Lane Two-way Roadway</p> <p>Construction work on South East corner of the intersection. TCP will safely allow access to Edward St south.</p>
--	------------------------------------------------------------------------------------------------------------------------------------------------------------------------------------------------------------------------------------------------------------------------------------------------------------------------------------------------------------------------------------------------------------------------------------------------------